

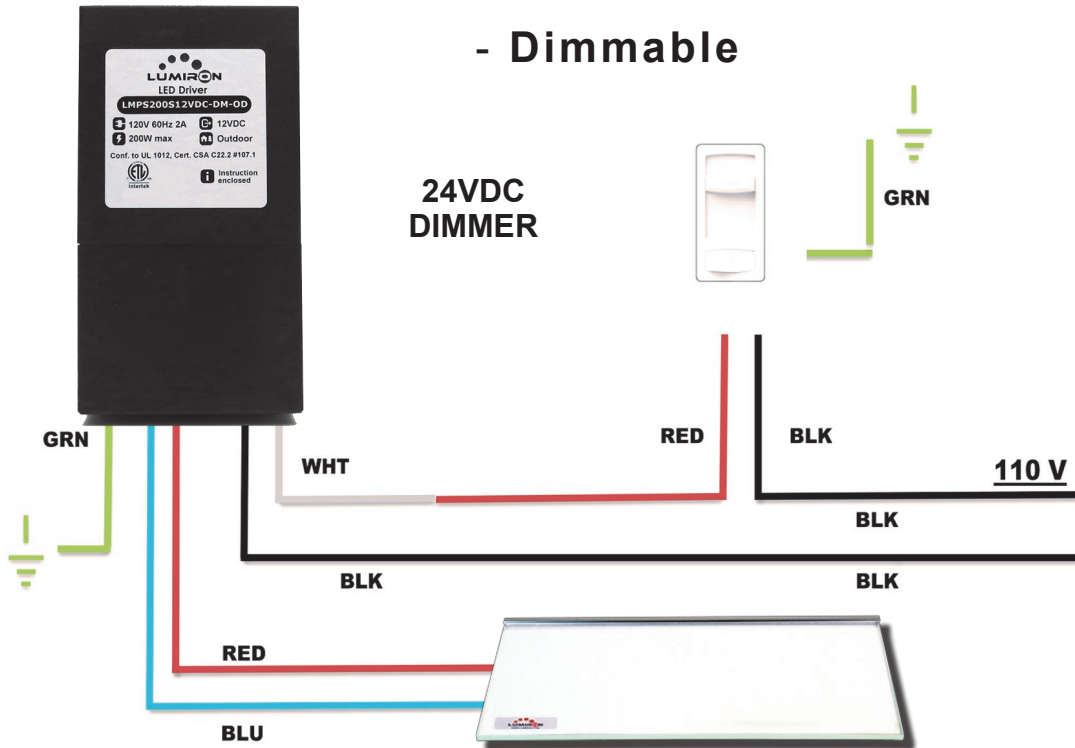
DAKOTA LED LIGHT PANEL SERIES

Installation

- Non Dimmable



- Dimmable



IMPORTANT

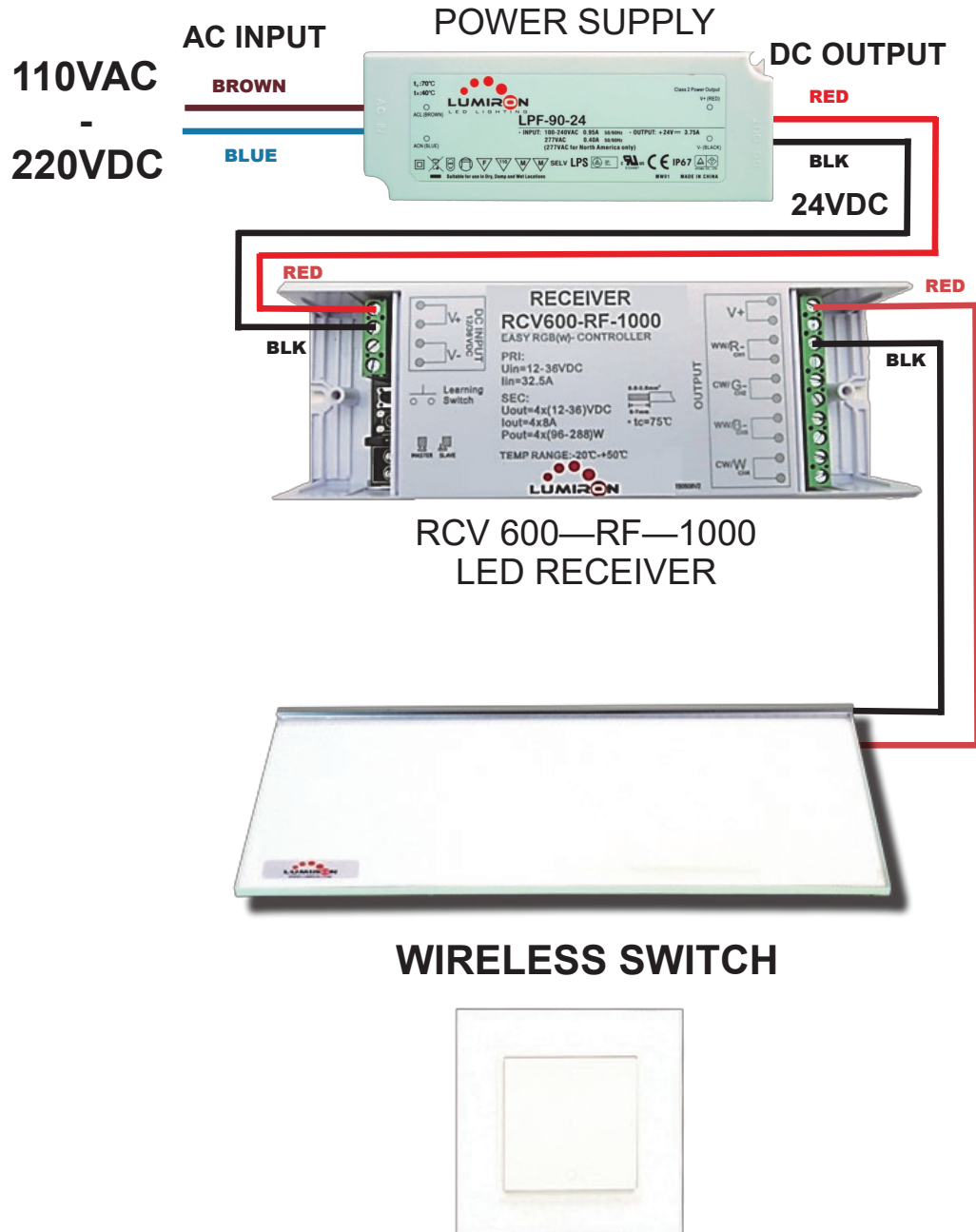
Do not connect the Dakota LED Light Panel directly to AC 110V-220V.



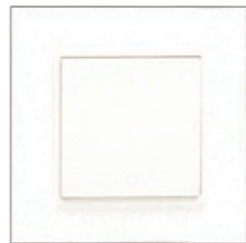
(305) 652-2599 | www.lumiron.com
20725 NE 16 AVE A-33 Miami, FL 33179
sales@lumiron.com

DAKOTA LED LIGHT PANEL SERIES

Installation



WIRELESS SWITCH



IMPORTANT

Do not connect the Dakota LED Light Panel directly to AC 110V-220V.

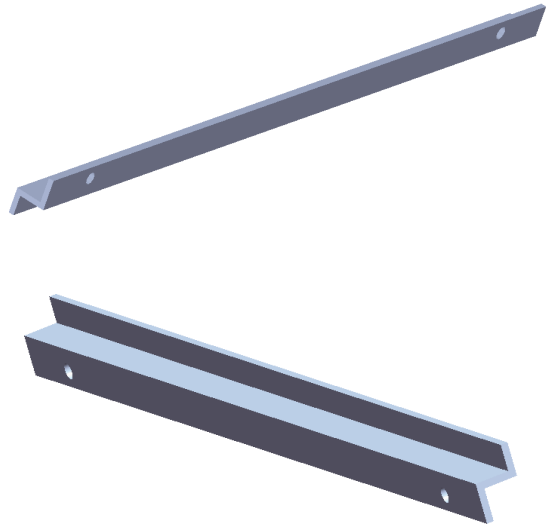
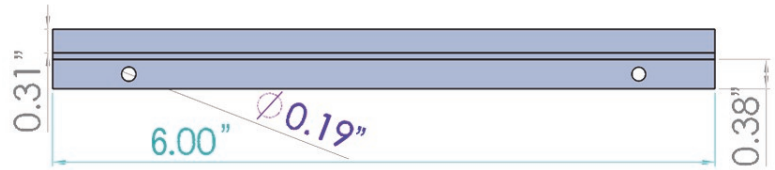


(305) 652-2599 | www.lumiron.com
20725 NE 16 AVE A-33 Miami, FL 33179
sales@lumiron.com

DAKOTA LED LIGHT PANEL SERIES

Mounting Options

1- Brackets



2 - Screws



IMPORTANT

Do not connect the Dakota LED Light Panel directly to AC 110V-220V.



(305) 652-2599 | www.lumiron.com
20725 NE 16 AVE A-33 Miami, FL 33179
sales@lumiron.com

DAKOTA LED LIGHT PANEL SERIES

Mounting Options

3- RTV 108 Silicone



Recommendations

Behind LED Bar on the edge of the panels you can put an aluminum strip 1/2"-2" wide with a 1/16" thickness or you can also put stone instead.

IMPORTANT

Do not connect the Dakota LED Light Panel directly to AC 110V-220V.



(305) 652-2599 | www.lumiron.com
20725 NE 16 AVE A-33 Miami, FL 33179
sales@lumiron.com